

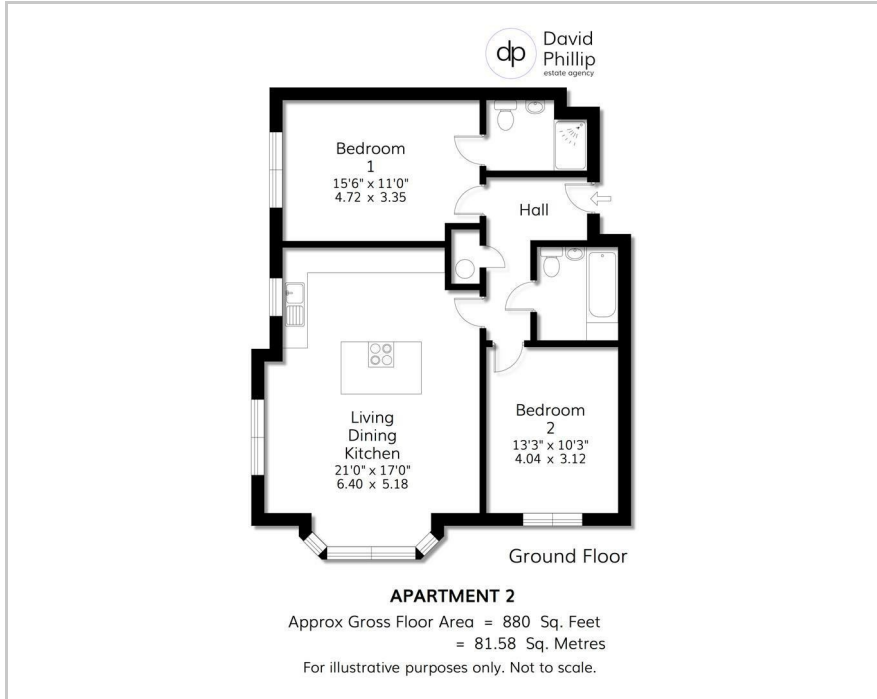


2 Rosemont House Breary Lane, Leeds, LS16 9AD

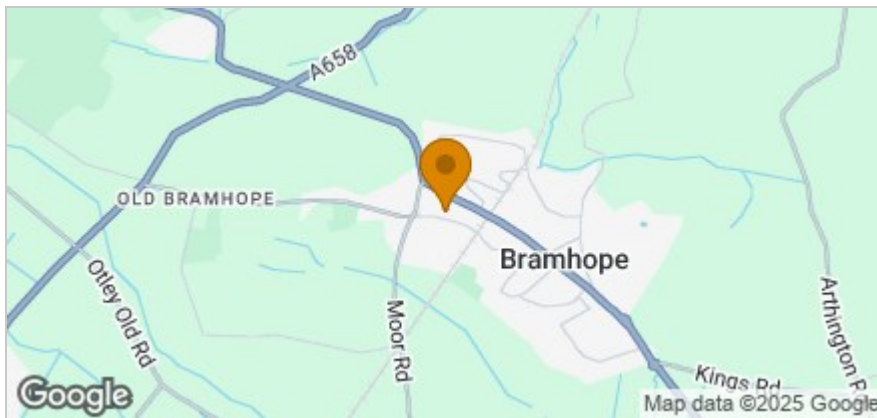
Price Guide £380,000



## Floor Plan



## Area Map



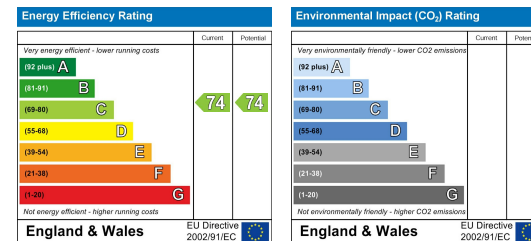
## Accommodation

- A Brand-New Luxury Stone Built Ground Floor Apartment for the over 55's
- Part of a Prestigious and Distinctive Purpose-Built Property
- Prominent Central Village Location Close to Excellent Amenities
- Two Double Bedrooms, En Suite and Three-Piece Bathroom
- Bespoke Mereway Kitchen Area with Bosch Appliances
- Lovely Light and Spacious Open Plan Living Space
- Most Attractive Surrounding Peaceful Communal Gardens
- One Designated Parking Space and a Car Charger
- Energy Performance Certificate (EPC) Rating C
- Council Tax Band E

## Viewing

Please contact our David Phillip Estate Agents Office on 01134 676 400 if you wish to arrange a viewing appointment for this property or require further information.

## Energy Efficiency Graph



These particulars, whilst believed to be accurate are set out as a general outline only for guidance and do not constitute any part of an offer or contract. Intending purchasers should not rely on them as statements of representation of fact, but must satisfy themselves by inspection or otherwise as to their accuracy. No person in this firm's employment has the authority to make or give any representation or warranty in respect of the property.